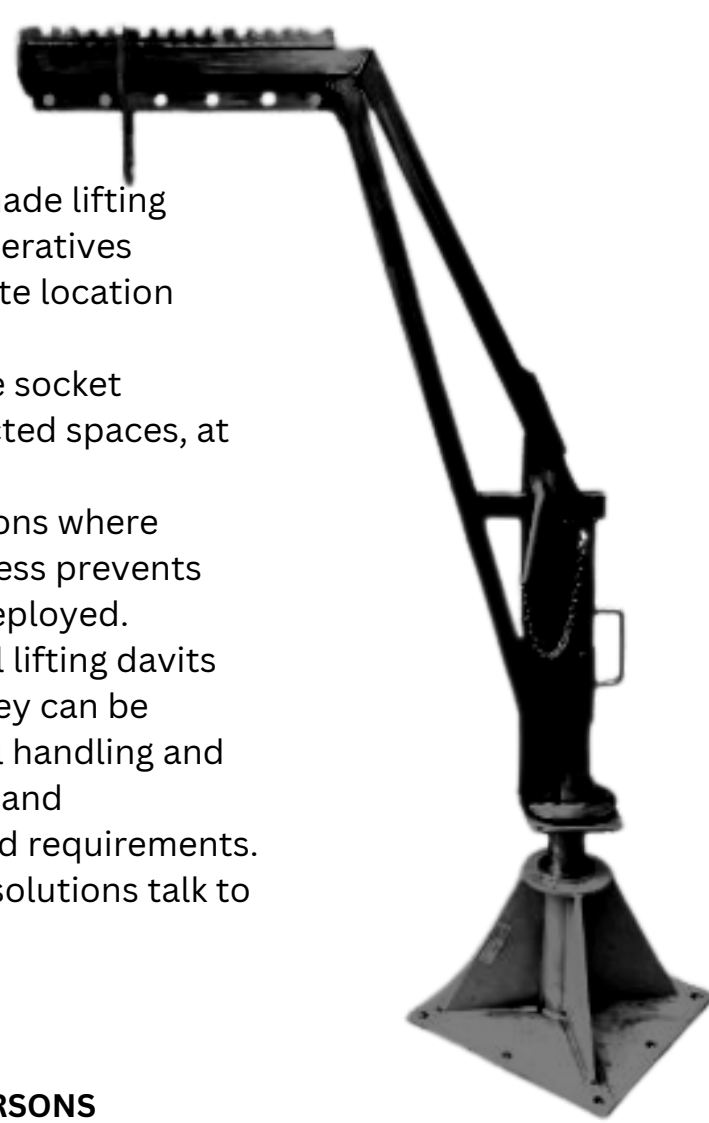


Lean-Over Lifting 500KG Davit

The range offers precision-made lifting equipment to match your operatives handling expectations and site location requirements. These lifting Davit cranes are socket mounted for sitting in restricted spaces, at the side of hand-railing or locations where obstacles or remote site access prevents standard cranes being deployed. These robust yet economical lifting davits are truly transportable as they can be easily dismantled for manual handling and are available in various sizes and capabilities to meet your load requirements. For more non-standardised solutions talk to our sales team.



NOT SUITABLE FOR LIFTING PERSONS

Optional Extras to meet your special requirements are available/ Options include:

Hook suspension manual chain hoists in standard or anti-corrosion finish
Hook suspension electric hoists in a choice of voltages with various lift heights to suit your application.

Galvanised or stainless steel screw pins or safety shackles

Galvanised or stainless steel snub lift chain with shackle suspension and suspension hook

Galvanised or stainless steel pump lifting chain with rings at 1000 mm intervals plus shackles to suit the load connection requirements.

Sockets

A range of galvanised socket types is available to order for use with your new Davit. These Davit sockets can also be ordered separately for your existing davit(s), subject to socket diameter (Please contact us for prices).

Lifting davit sockets are readily available for flush mounting (Cast-in), surface mounted (Pedestal) or Wall /side mounted applications

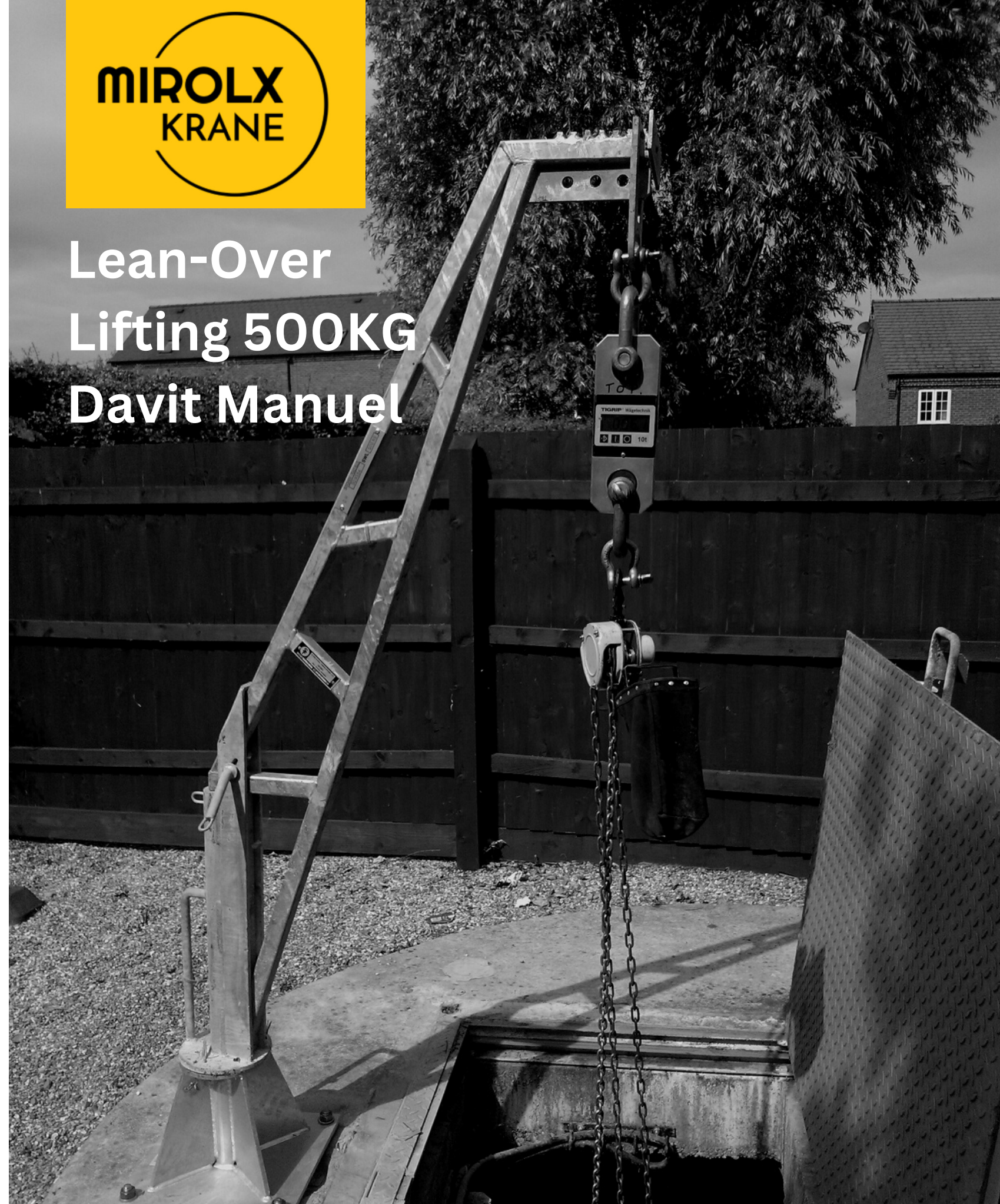
Eethuisstraat 127/b52170
Schoten, Antwerp,
Belgium

www.miroloxcranes.com



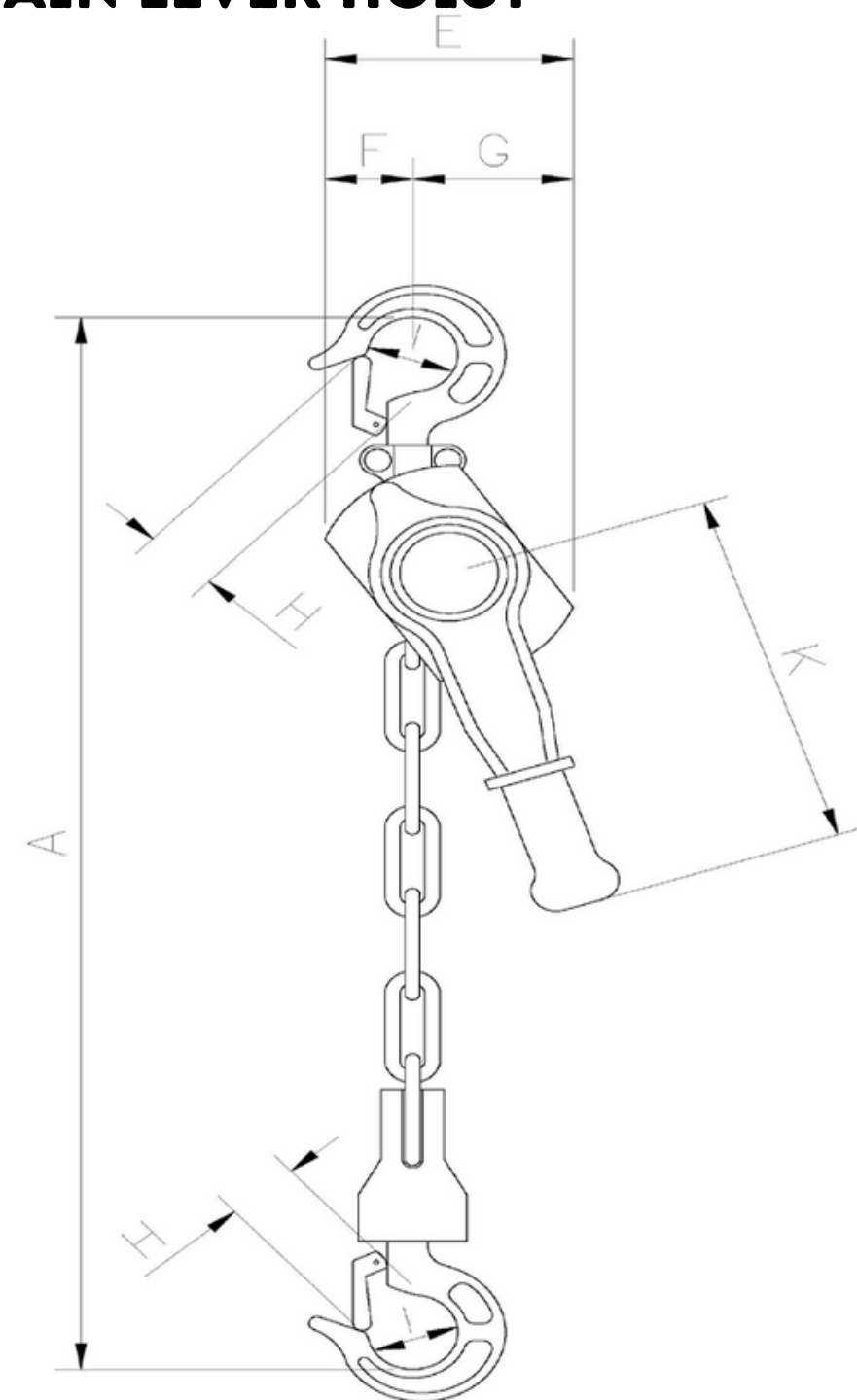
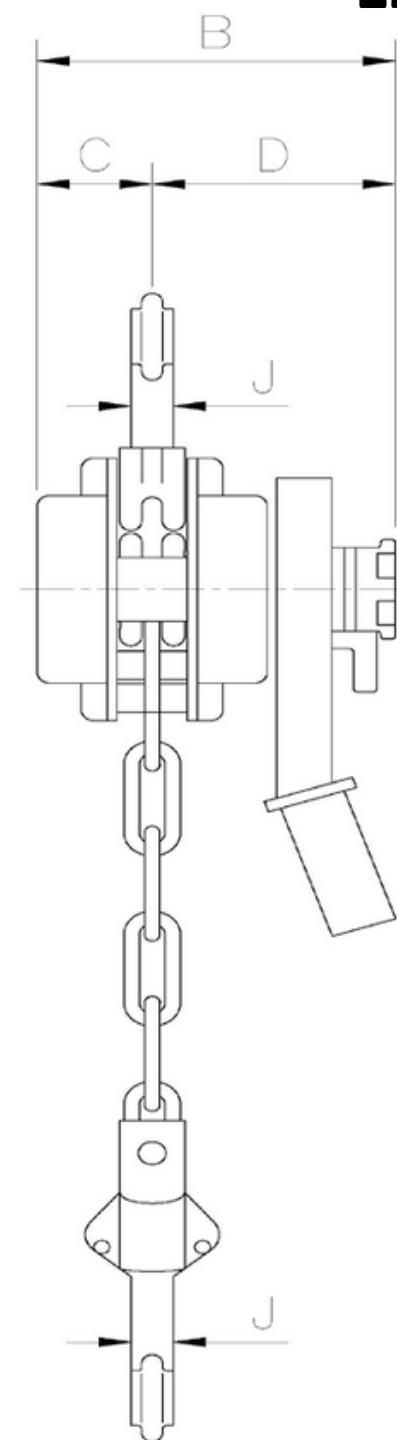
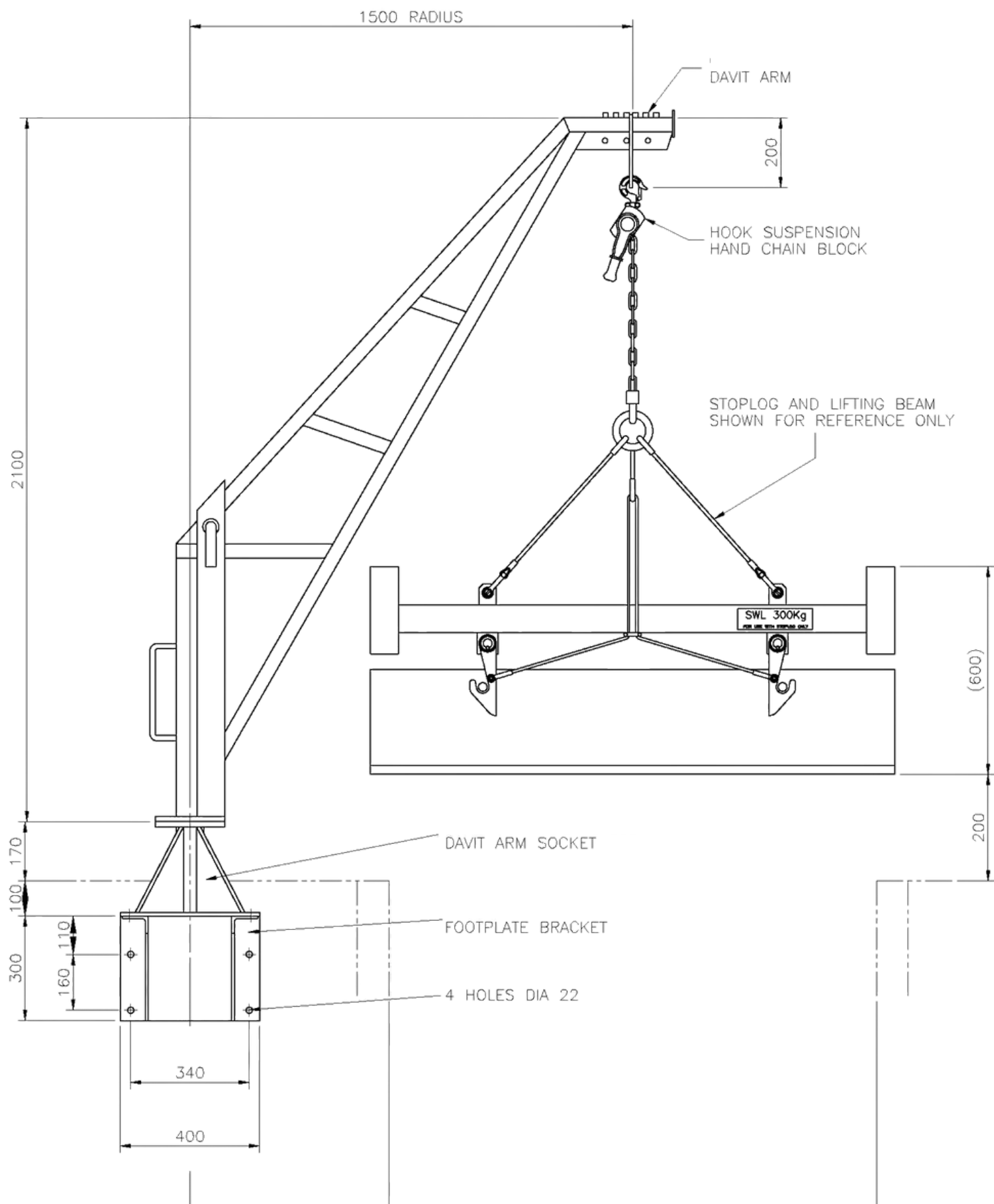
**MIROLX
KRANE**

Lean-Over Lifting 500KG Davit Manuel



www.miroloxcranes.com

***OPTION**
LINK CHAIN LEVER HOIST

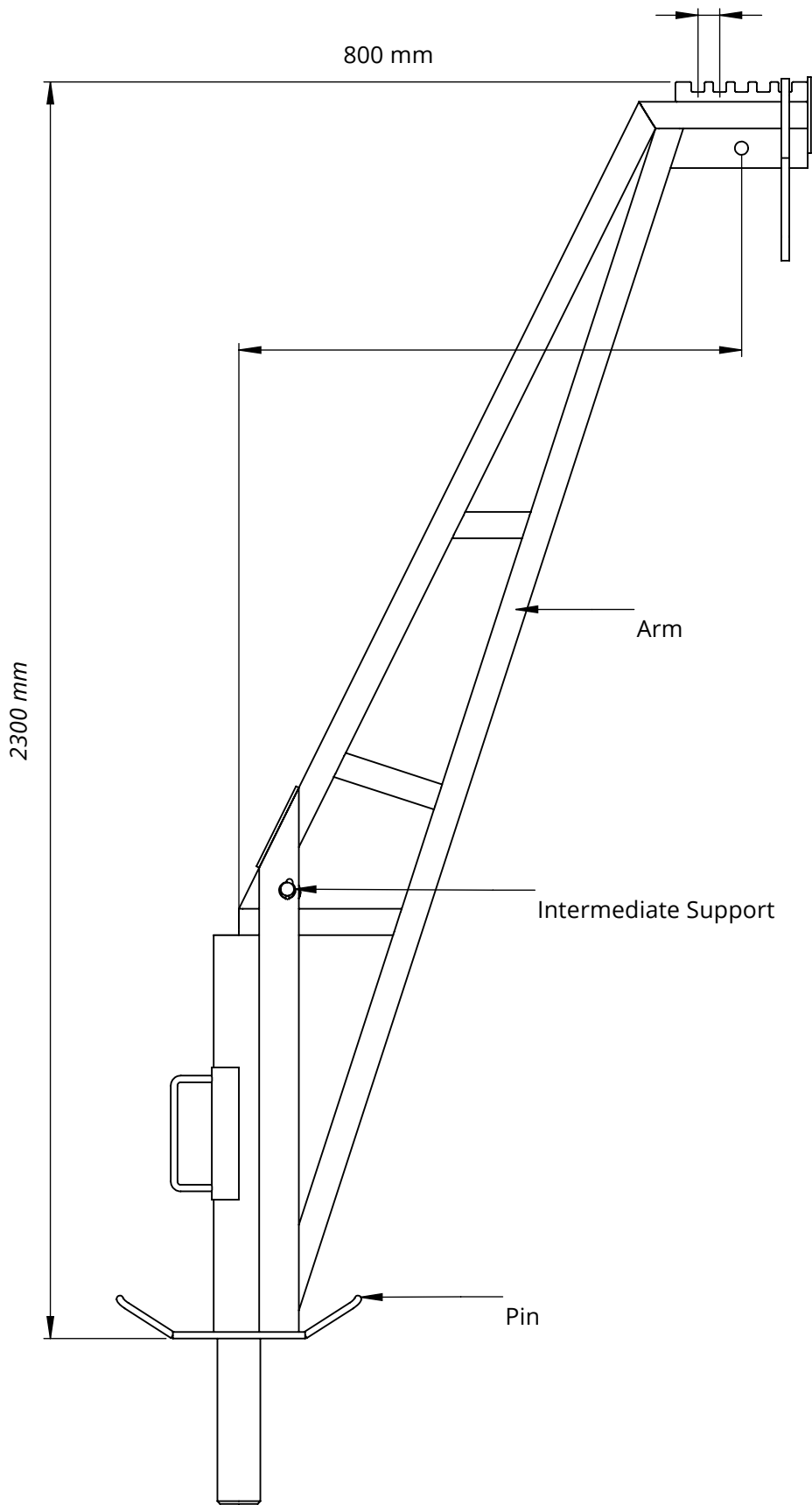




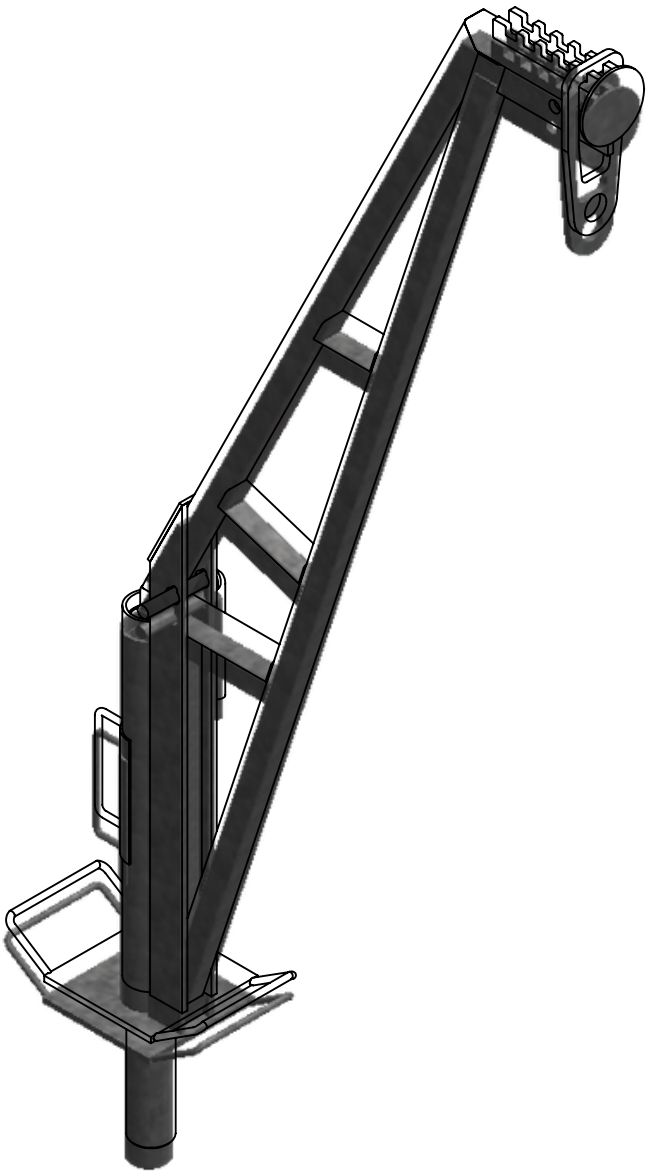
SWL kg	A Spigot Dia. (mm)	B Overall Height	C Max Reach	D Suspension Height	Post weight Kg	Jib Weight kg	Cast in socket Part No.	Pedestal socket Part No	Wall socket Part No.
500	76	2095	1050	2000	16	23	SA4	SA5	SA6
500	76	2145	1200	2050	19	25	SA4	SA5	SA6
500	76	1900	760	1805	16	20	SA4	SA5	SA6
500	65	2095	1050	2000	25	25	SA1	SA2	SA3
500	65	1995	760	1900	20	20	SA1	SA2	SA3
500	76	2300	800-1200	2000	25	25	SA4	SA5	SA6
750	90	2095	1070	2000	25	25	SA10	SA11	SA12
1000	90	2095	1070	2000	25	25	SA10	SA11	SA12

"500kg WLL 760mm Reach Lean Over Davit"

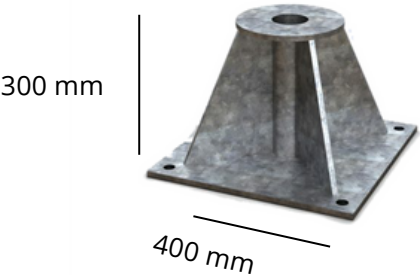
Arm - 22kg, Intermediate Support - 24kg, Pin - 25kg



Front Elevation



Isometric View



LEAN-OVER
LIFTING 500KG DAVIT



This drawing remains the property of MIROLX KRANE and may not be copied or distributed, wholly or partially, without express permission in writing. If in doubt, ask. Unless otherwise stated, the structural integrity of the supporting substrate or superstructure should be ascertained by the customer. MIROLX KRANE takes no responsibility

DO NOT SCALE OFF THIS DRAWING

Drawing No	.TAE-200-01		
Description	500KG Davit		
Revision	A		
Scale1:	10 @ A3Sheet1 of 1		
Date	17	07	2023
Model			



Eethuisstraat
127/b52170 Schoten,
Antwerp, Belgium

www.miolxcranes.com

